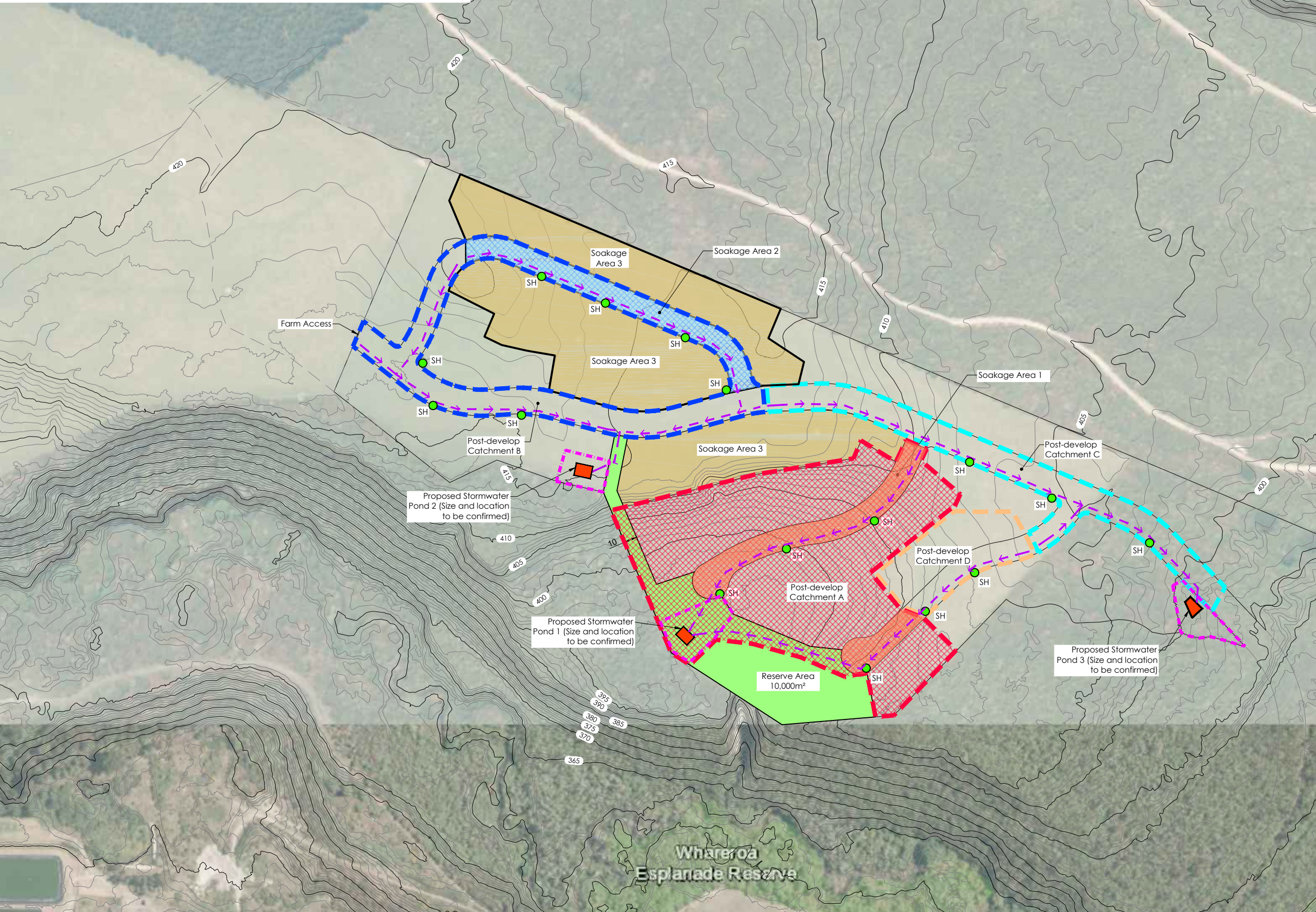


Appendix 2

Pond Summary Table			
Pond	Deals with:	Volume (approx.)	Outflow limited to:
1	10% > 1% AEP runoff post-development A	120m ³	Pre-development 10% AEP (approx. 90L/s)
2	10% > 1% AEP runoff post-development B	240m ³	Pre-development 10% AEP (approx. 130L/s)
3	10% > 2% AEP runoff post-development C	60m ³	Pre-development 10% AEP (approx. 70L/s)



www.cheal.co.nz

Disclaimer:

This sketch drawing shall be used for the purpose of discussion and shall not form any part of a tender or construction process. The information hereon shall not be passed on to any third party without the express written permission of Cheal Consultants Ltd. In the event of this information being passed on to a third party, even with written permission, or the information being used for any other purpose than discussion, Cheal Consultants Ltd take no responsibility for its correctness and subsequent use.

Existing contours obtained from Lidar in NZTM coordinate system.

Road layout indicative only.

Contour Interval = 1.0m

Catchment Description:

Post-develop Catchment	Total Catchment Area (m ²):	Road Area (m ²)	Color
A	32,140	5,140	Red hatched
B	12,490	12,490	Blue hatched
C	8,480	8,480	Cyan hatched
D	5,066	1,645	Orange hatched

Soakage Area Description:

Soakage Area:	Total Soakage Area (m ²):	Road Area (m ²)	Color
1	32,140	Road & Lots	Yellow
2	4,300	Road	Blue
3	22,260	Lots	Orange

Legend:

- Reserve
- SH Proposed Road Soak Hole
- Flowpaths
- Indicative Local Purpose Drainage Reserve

Rev	Date	Amendment	By	Chk	App
B	11/09/19	Lot Boundaries Removed	RS	TK	DGF
A	06/06/19	For Review & Discussion	RS	TK	TWB

Project Title
The Proprietors of Hauhungaroa No. 6 Trust Whareroa North

Drawing Title
Conceptual Design Stormwater Catchment Analysis Pre & Post Development

Surveyed	-	-	-
Designed	T. Kelly	15/03/19	TK
Drawn	R. Singh	16/03/19	RS
Checked	T. Kelly	05/06/19	TK
Approved	T. Brand	05/06/19	TWB

Status **INFORMATION**

Scale A1	1:1500	A1
A3	1:3000	

Drawing Number **IBA1070-656** | Rev **B**

