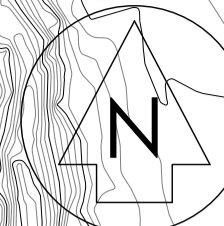


Appendix 1



cheal

www.cheal.co.nz

Disclaimer:

This sketch drawing shall be used for the purpose of discussion and shall not form any part of a tender or construction process. The information hereon shall not be passed on to any third party without the express written permission of Cheal Consultants Ltd. In the event of this information being passed on to a third party, even with written permission, or the information being used for any other purpose than discussion, Cheal Consultants Ltd take no responsibility for its correctness and subsequent use.

Existing contours obtained from Lidar in NZTM coordinate system.

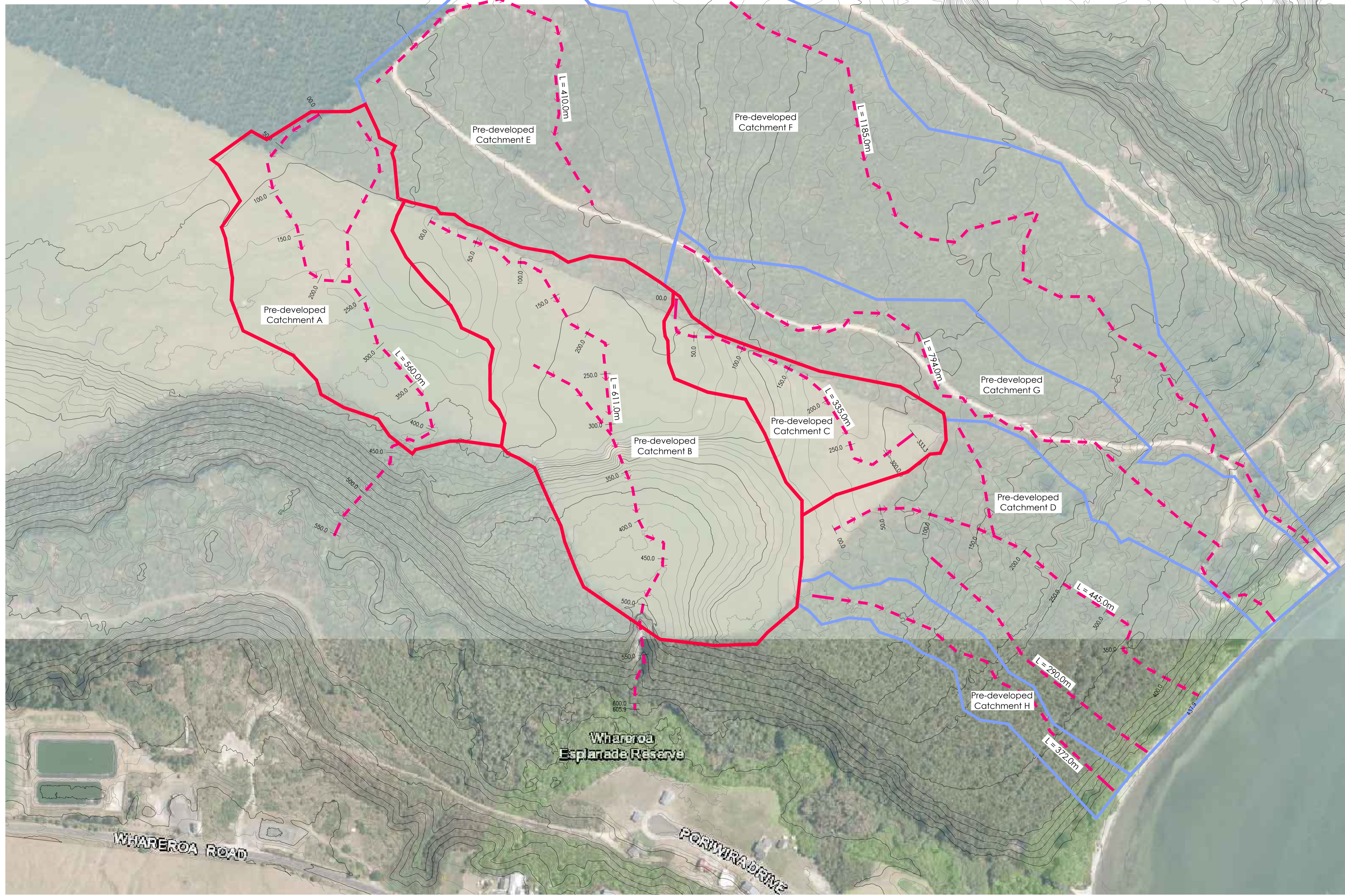
Contour Interval = 1.0m

Catchment Description:

Pre-developed Catchment	Catchment Area (m ²):	Flow Length (m):
A	55,189.40	560.0
B	86,931.90	611.0
C	24,090.20	335.0
D	72,305.60	445.0
E	67,526.30	410.0
F	131,963.00	1185.0
G	60,670.00	794.0
H	17,171.20	794.0

Legends:

- Main Catchment Areas
- Adjacent Catchment Areas
- - - - - Stormwater Flow Path



Rev	Date	Amendment	By	Chk	App
A	26/04/19	For Review & Discussion	RS	-	-

Project Title
The Proprietors of Hauhungaroa No. 6 Trust Whareroa North

Drawing Title
Conceptual Design Stormwater Catchment Analysis Pre-Development

Surveyed	-	-	-
Designed	-	-	-
Drawn	-	-	-
Checked	-	-	-
Approved	-	-	-

Status **INFORMATION**

Scale A1	1:2000	A1
A3	1:400	

Drawing Number **1070-SK650** Rev **A**

